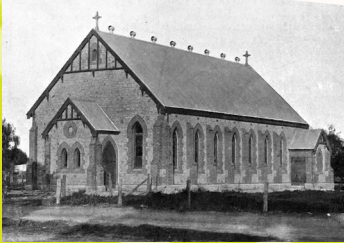


### Historic Deakin Avenue - 41 min / 2.71 km

1

From the riverbank, this walk leads directly into Mildura's Centre. Significant points of interest include the fountain officially opened in 1985 by the Prince and Princess of Wales, War Memorial, Alfred Deakin Memorial marking the centenary of the irrigation colony in 1987, Mildura icon the Grand Hotel, and a number of distinctive churches.



### Exploring East Mildura - 45 min / 3 km

2

Opening in 1957, the old Water Tower is one of a few to be seen around the district. You will pass Mildura Primary School which opened in 1890. Strolling down Lemon Ave offers a lovely indication of what Mildura must have looked like in the early 20th Century. This area was home to the tradesmen's class and three of the houses along Lemon Ave predate 1900 and another 14 are pre World War 1.



### Mildura's Riverfront History - 51 min / 3.4 km

3

This is a picturesque walk that takes you along the riverbank and up past Rio Vista. Points of interest include: the Water Play area, which marks the site of the old Risby Sawmill (circa 1888), Lock 11, which was completed in 1928, and significant sculpture from the Mildura Sculpture Triennials which took place between 1961 and 1988.



### Rio Vista and Surrounds - 32 min / 2.12 km

4

Discover the architectural gems that are hidden in Mildura's leafy streets. This walk takes you past some of Mildura's oldest and most beautiful homes, from Victorian to Edwardian and Spanish Mission to Californian Bungalow. The walk begins at Mildura's most stunning building, Rio Vista. This was once the home of the district's founding family, the Chaffey's.



### The Living Heart of Mildura - 31min / 2 km

5

Starting at the Grand Hotel (previously known as the Coffee Palace until 1920), this walk takes you through the heart and soul of Mildura's retail and commercial district with lots of history to explore. Opposite the Mildura Brewery you will see the Telephone Exchange, in 1910 it was the site of the Wonderland open air cinema.



### Mildura Homestead Cemetery - 39 min / 2.5 km

6

Mildura's earliest cemetery, the Mildura Homestead Cemetery, actually consists of two adjacent graveyards and includes graves of some early pioneers and members of the Chaffey family.

Start with a stroll around the beautiful Mildura Station Homestead at 278A Cureton Avenue, and then walk 200 metres downstream to find the Cemetery. Alternatively, start your walk from Rio Vista house and enjoy the beautiful homes situated along the river.

explore your world on foot



## Historic Walks



**Trace the story of how Mildura become an irrigated oasis in the midst of an arid land with these Chaffey Trail historic walks.**

21 October 1886 Chaffey brothers signed the agreement with the Victorian Government to develop the land that is now known as Mildura. This was formalised on 31 May 1887.

*Produced in conjunction with the Chaffey Trail Reference Group.*

Brought to you by:



[www.walkingmaps.com](http://www.walkingmaps.com)



# THE CHAFFEY TRAIL

Mildura – Australia's First Irrigation Colony

## Get the most out of your walk

### Follow the trails on your Smart Phone

As you walk each route, use

[www.walkingmaps.com.au](http://www.walkingmaps.com.au) to access historical information about buildings, memorials, sculpture and other points of interest along the way.

To access this information visit:

[www.victoriawalks.org.au/Mildura](http://www.victoriawalks.org.au/Mildura) and select the relevant walk.

Further information on Mildura's historical sites can be found at [www.thechaffeytrail.com.au](http://www.thechaffeytrail.com.au)

### 6 Mildura Homestead Cemetery & Mildura Station Homestead 278A Cureton Avenue, Mildura

